

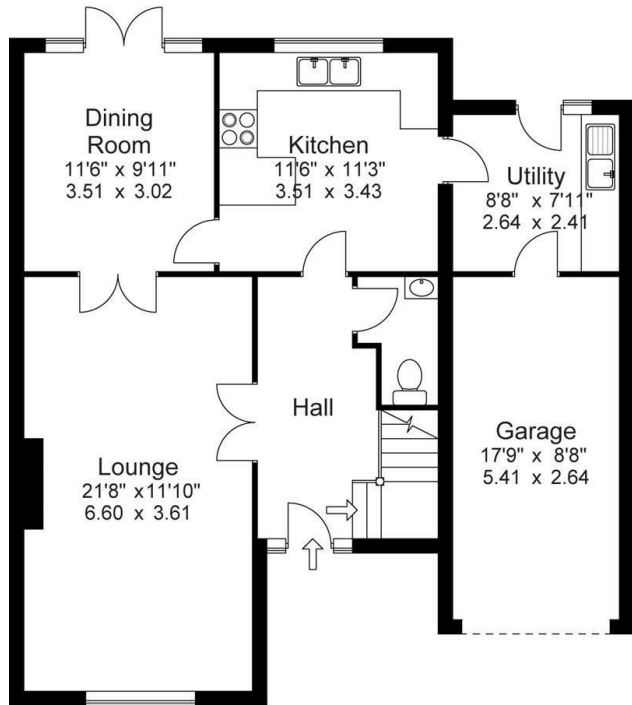


8 Rothwell Road, Halifax, HX1 2HA

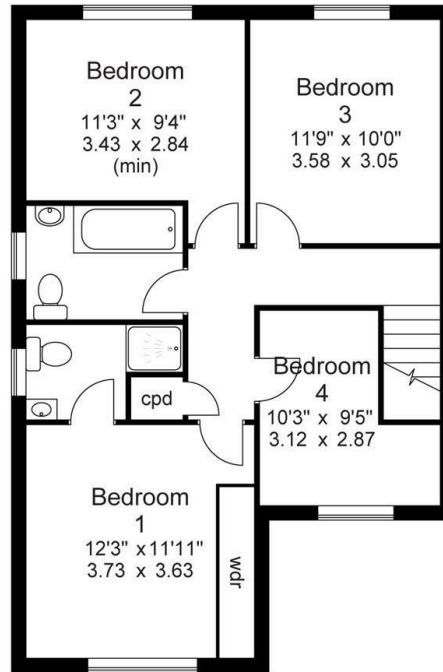
Per Month £1,700 Per Month

- : Highly Desirable Location
- : Attractive Unfurnished Accommodation
- : Bond 1800
- : Viewing Strongly recommended
- : 4 Bedroomed Family Home
- : No Pets
- : Gardens & Integral Garage
- : Easy Access To Halifax Town Centre
- : No Smokers
- : 2 Reception Rooms 2 Bathrooms Downstairs Cloakroom & Utility Room

Approx Gross Floor Area = 1533 Sq. Feet
 (Including Garage) = 142.4 Sq. Metres

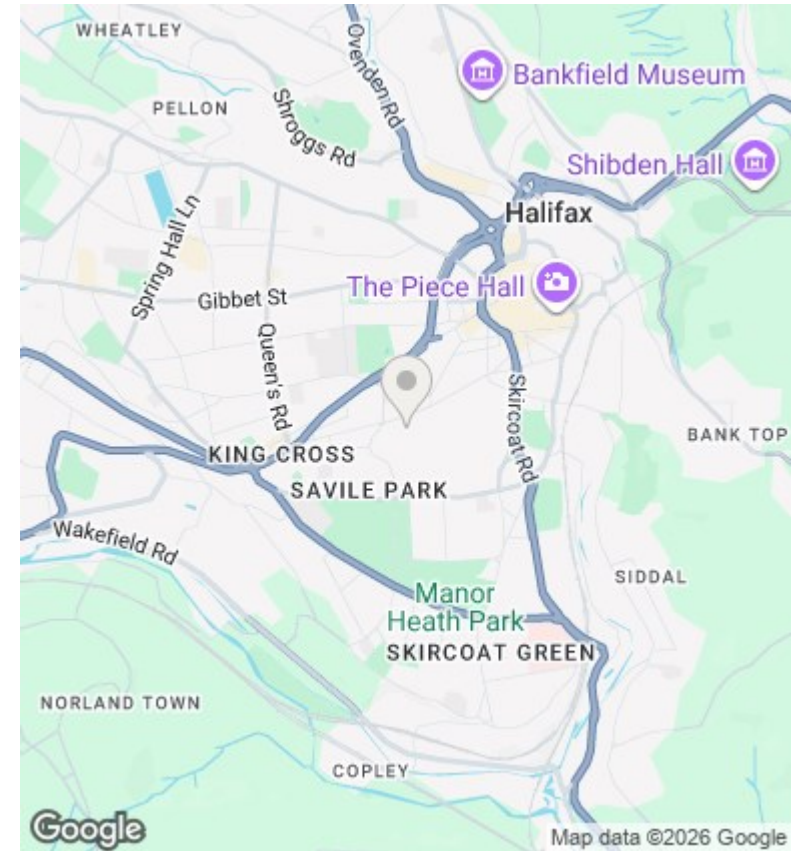


Ground Floor



First Floor

For illustrative purposes only. Not to scale.



Directions

SAT NAV HX1 2HA

Viewings

Viewings by arrangement only. Call 01422 349222 to make an appointment.

Council Tax Band

E

EPC Rating:

Energy Efficiency Rating		Current	Potential
Very energy efficient - lower running costs			
(92 plus) A			
(81-91) B			
(69-80) C			
(55-68) D			
(39-54) E			
(21-38) F			
(1-20) G			
Not energy efficient - higher running costs			
England & Wales		EU Directive 2002/91/EC	